

Recombinant GammaBind G Type 2

ChemWhat
A brand under Watson

Catalog #: 1002-08 Lot #: See label

Description

Molecular Weight:

Approximately 21.6 kDa, a single non-glycosylated polypeptide chain containing 199 amino acids. But it migrates with an apparent molecular mass of 31 kDa in SDS-PAGE.

Source:

Escherichia coli.

Quantity:

1mg/10mg/100mg/1g

Protein per Gram Powder:*

See Label.

Concentration for 1 unity DO at 280 nm:

1.008 mg/ml

Specification

Physical Appearance:

Sterile Filtered White lyophilized (freeze-dried) powder.

Purity:

> 97 % by SDS-PAGE and HPLC analyses.

Specificity:

When GammaBind G Type 2 is immobilized on agarose activated membranes, or other supports it can be used to separate and purify IgG antibodies. When conjugated to enzymes, fluorescent dyes, biotin

or radioisotopes GammaBind G Type 2 can be used to detect antibody complexes.

Endotoxin Level:

Less than 1 EU/ μ g of GammaBind G Type 2 as determined by LAL method.

Formulation:

Lyophilized from a 0.2 μ m filtered concentrated solution in 10mM PB, pH 7.0.

Usage Guide

Stability & Storage:

- Use a manual defrost freezer and avoid repeated freeze-thaw cycles.
- 12 months from date of receipt, -20 to -70 °C as supplied.
- 1 month, 2 to 8 °C under sterile conditions after reconstitution.
- 3 months, -20 to -70 °C under sterile conditions after reconstitution.

Reconstitution:

Dissolve in distilled water.

Shipping:

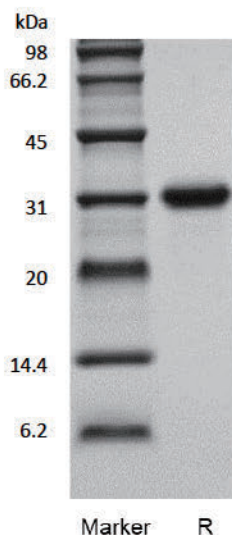
The product is shipped at ambient temperature. Upon receipt, store it immediately at -20 °C.

*Masses of the protein and powder are not equal.

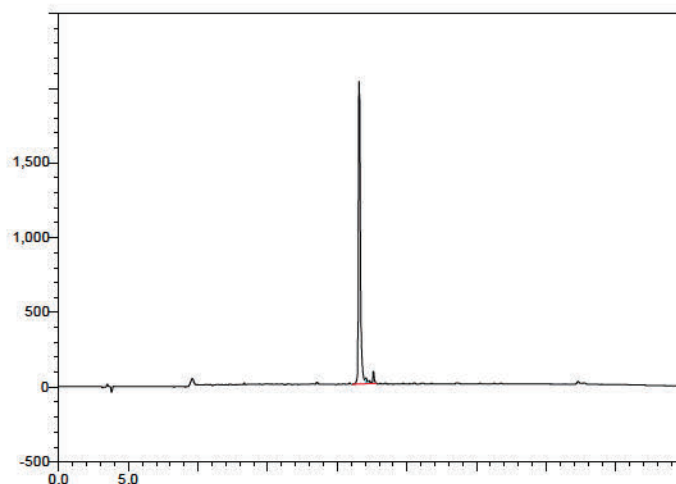
Background

GammaBind G Type 2 is a bacterial protein produced in *Escherichia coli*. It binds with high affinity to the constant region of many types of immunoglobulin G, and can be used to detect, quantify and purify IgG antibodies and antigen/antibody complexes. GammaBind G Type 2 binds tightly and specifically to antibodies from many different species compared with protein A. It is different with non-recombinant Protein G, GammaBind G Type 2 does not cross-react with human serum albumin, IgM, IgA, IgE, IgD or cat/chicken IgG.

SDS-PAGE



RP-HPLC



Rev. 11/01/2018 V.1

Manufactured By CHEMWHAT LIMITED

FOR RESEARCH USE ONLY. NOT FOR HUMAN USE.

<https://www.chemwhat.com>

Email: contact@chemwhat.com